

Luxembourg-centre ville – CBD

Office for rent in beautiful building with service

Property ID: 21



Property ID: 21 - L-1331 Luxembourg-centre ville – CBD

- At a glance
- The property
- Energy Data
- A first impression
- Contact partner

Property ID: 21 - L-1331 Luxembourg-centre ville – CBD

At a glance

Property ID	21	Rent price	On request
		Commission	Fees: 15% to the charge under tenant
		Total Space	ca. 80 m ²

Property ID: 21 - L-1331 Luxembourg-centre ville – CBD

Energy Data

Type of heating	Central heating
Energy information	At the time of preparing the document, no energy certificate was available.

Property ID: 21 - L-1331 Luxembourg-centre ville – CBD

The property



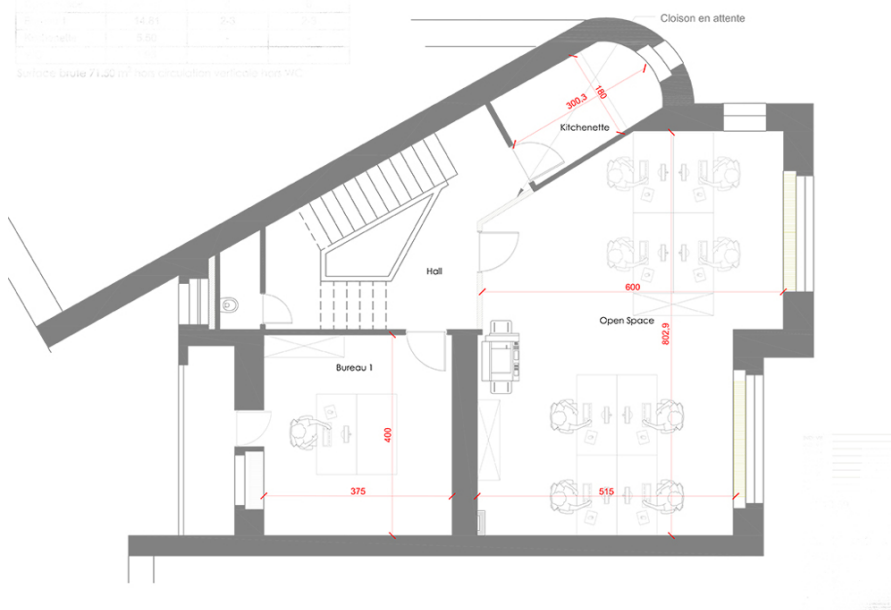
Property ID: 21 - L-1331 Luxembourg-centre ville – CBD

The property



Part	Surface (m²)	Surface (m²)	Surface (m²)
Bureau 1	54,51	2,0	2,0
Kitchenette	9,50	-	-
Hall	1,00	-	-
Open Space	-	-	-

Surface brute 71,02 m² hors circulation verticale hors VPP



Property ID: 21 - L-1331 Luxembourg-centre ville – CBD

A first impression

Offices to let in an entirely renovated building on one of the prestigious avenues of Luxembourg city -- CBD

This property offers a common reception, meeting room, leisure room, kitchen and toilets, to be shared with the other two tenants.

It is near all the amenities (public transport, restaurants, shops, etc) and close to the city center. The parking on the Winston Churchill square is also close by.

Located on one of the sought after avenues of Luxembourg (Boulevard Grande Duchesse Charlotte), these offices are 15 min. walking from the railway stations, a few minutes from the main bus hub and 15 min. from the international airport.

Property ID: 21 - L-1331 Luxembourg-centre ville – CBD

Contact partner

For further information, please contact your contact person:

VON POLL REAL ESTATE Limpertsberg

6, avenue Pasteur, L-2310 Luxembourg

Tel.: +352 26 47 98

E-Mail: limpertsberg@von-poll.com

To the Disclaimer of von Poll Immobilien GmbH

www.von-poll.com